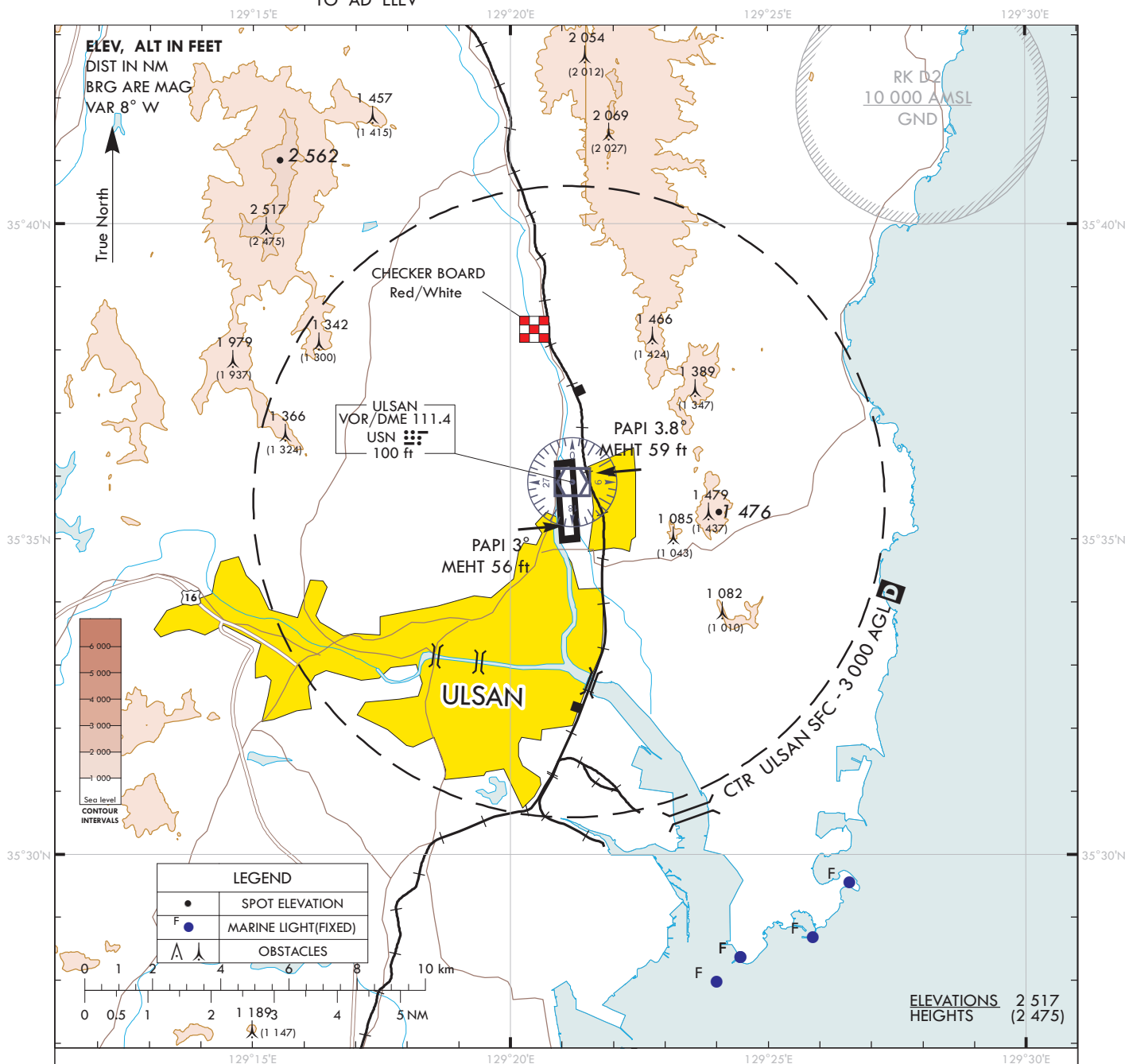


**VISUAL
APPROACH
CHART - ICAO**

AD ELEV 42 ft
HEIGHTS RELATED
TO AD ELEV

POHANG APP 124.25
ULSAN 120.2
ULSAN TWR 118.75

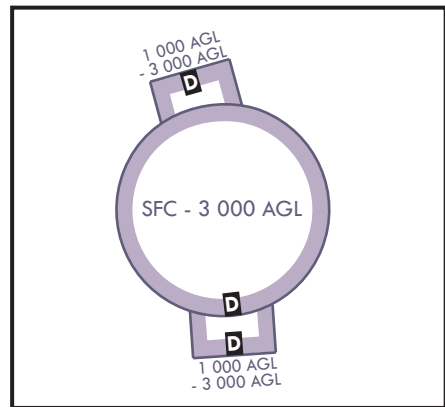
ULSAN/Ulsan



VISUAL APPROACH PROCEDURE

1. Visual approach may be initiated by ATC or approved upon pilot request on traffic permitting basis when :
 - a. Ceiling : At or above 500 ft plus MVA
 - b. Visibility : Not less than 3 SM
 - c. Visual approach for flying east of aerodrome is not authorized.

2. ATS airspace : Class D(Refer to ENR 2.1-9)



Change : Information of airspace classifications.